

Letters to Sala

by Arlene Hutton



FACEY THEATRE

April 28, 29, 30 & May 1, 2025

Evening shows at 7:00 pm

A Facey Drama Production



HEADQUARTERS

salon • spa • laser

• the place to go •





Pizza • Pasta • Salads • Ribs • Sandwiches

LICENSED • DINE IN • TAKE OUT • DELIVERY
OPEN LATE NITE 7 DAYS A WEEK

Take-out and Delivery
Order On-line at
www.bostonpizza.com



Sherwood Park Locations

Broadway

#11 Broadway Blvd.
Phone **780-464-9999**

Wye Road

967 Ordze road
Phone **780-467-2223**



OPENING HOURS

Sunday-Thursday: 11am - 11pm
Friday-Saturday: 11am - Midnight

ENJOY OUR GREAT TASTE AT HOME



Letters to Sala

Principal's Message



Principal's Message

Welcome parents, family, friends, and our excited audience! On behalf of Bev Facey Community school, I want to thank each of you for attending what will be an amazing performance and for supporting our hard-working ultra-talented cast of students. They have shown passion, commitment, and loyalty to one another all through the journey of preparing for these productions. In doing so they truly have represented the very best of what it means to be a Bev Facey Falcon.

It has been my pleasure over the last few months to see firsthand the intense work and awesome results that our students have been able to achieve, and now tonight they will get to share that with all of you on the stage!

It has been truly inspiring to see our cast rally around each other and along with the excellent guidance of our drama staff they have created an optimal environment for each of them to take risks and excel in their individual and group performances. Each of our students have worked long hours and have all taken turns at leading one another to continually raise the bar in these productions. The entire cast's commitment and passion is a testament to the fantastic artistic learning environment that we support and benefit from within the Bev Facey community.

Letters *To Sala* is a remarkable and true history of a young girl's survival during wartime Germany. Sala's story is, above all, a story of life and one young woman's way of seeing beyond years of horror. This is a powerful and emotional rendering – moving in the extreme, yet uplifting in its themes of resilience, the importance of family, and the human capacity for love and hope in the midst of adversity.

Your ongoing support of the Bev Facey Performing and Creative Arts program is greatly appreciated. Thank you again for your patronage and on being the positive catalyst in the audience for all our students—now, please sit back, clear your thoughts, and let our cast transport you to someplace special!

Ken Wlos
Principal

Principal's Message

Letters to Sala

Director's Notes

Director's Notes



Five years. Seven Nazi labor camps. More than 350 hidden letters.

Sala Garncarz Kirschner kept her secret for more than 50 years, concealing her incredibly painful history in an old Spill and Spell box. Everything changes when Sala reveals the cache to her grown daughter, Ann.

The show is adapted from *Sala's Gift* by Ann Kirschner. This is a story that speaks across time, of the darkest impulses that humanity presents itself with. Sala's story, one of resilience in the face of evil and hope that the future will be better, must be told, never to be ignored. Directing this show has been one of the greatest honors of my life; to work with a cast and crew truly dedicated to telling this story.



Director's Notes



After reading *Letters to Sala* I knew that it was a story we needed to tell, to counter misinformation and prejudice in our larger culture and teach about this horrific moment in our collective history.

Letters to Sala

Director's Notes

Director's Notes

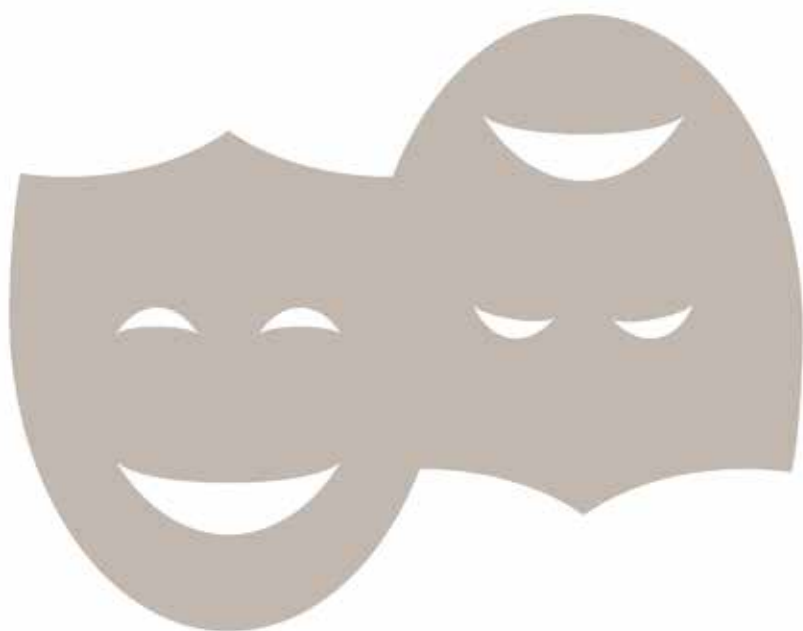
The students involved in the play were very moved by Sala's story. This play does a remarkable job of bringing history to life, of showing the innate humanity of the millions whose systematic dehumanization and degradation was to lead to their ultimate annihilation.

It reminds us that, not too long ago, an entire society descended into abject barbarism, the horror of which is still difficult to comprehend. We learn about the past so we do not forget what has come before us. We learn about the past so as not to repeat it. Never can we let the genocide of six million Jews and the murder of millions of other victims of Nazi persecution happen again.

I can't begin to tell you what a labour of love this show has been for me. I finally got to direct a play that I have loved for a very long time. The best thing is that I got to do it with a wonderful, mature and talented cast. Thank you to my cast for making a commitment and sticking to it, and thank you to the audience for coming to see this true story come to life!

Larry Frank
Director

Director's Notes



proud to support the
bev facey theatre program

hq
salonspa

hqsalonspa.ca

Letters to **Sala**

Cast

Letters to Sala

By Arlene Hutton

Adapted from the book *Sala's Gift* by Ann Kirschner

In New York City

SALA GARNCARZ – Elena Anthony and Marley Schmidt

ANN – Sidney Moore and Elizabeth Kyle

CAROLINE – Reagan Smith and Miya Gill

ELIZABETH – Grace Henrie and Tori Campbell

The Story

YOUNG SALA – Paige Hafner and Camryn Healy

In Sosnowiec

CHANA – Sage Aubrey and Emma Firmaniuk

RAIZEL – Raine Cadieux and Brielle Melnychuk

BLIMA – Heidi Provencher and Reba Bull

LAYA DINA – Taylor Stewart

ROZIA – Elena Anthony and Marley Schmidt

BELA – Grace Henrie and Tori Campbell

FRYMKA – Reagan Smith and Miya Gill

SARA – Sophie Spruston and Jaycee Wood

In the Camps

ALA GERTNER – Mya Brown-Hughes and Lily Kvalnes

CHAIM KAUFMAN – Max Moreau

HARRY HAUBENSTOCK – Evan Smith and Drew Cameron

ELFRIEDE PACHE – Sophie Spruston and Jaycee Wood

HERBERT PACHE – Evan Smith and Drew Cameron

LUCIA – Taylor Stewart

GUCIA – Sage Aubrey and Emma Firmaniuk

ZUSI – Mya Brown-Hughes and Lily Kvalnes

RACHEL – Heidi Provencher and Reba Bull

GLIKA – Elizabeth Kyle

NAZI GUARDS – Drew Cameron and Evan Smith

After Liberation

SIDNEY KIRSCHNER- Max Moreau

Director **Larry Frank**

Letters to

Sala

Cast Bios

Cast Bios



Elena Anthony

Sala Garncarz and Rozia

This is Elena's tenth show in the Facey Theatre program and she's excited to be playing Sala in *Letters to Sala*. You might recognize her as Rizzo from last year's production of *Grease*, and can catch her later this month as Donna in *Mamma Mia!*. Her favourite part of this rehearsal process has been watching the cast come together to bring the vision of the show to life and tie in all the different aspects of the story. Elena would like to thank everyone at Facey Theatre for being the best theatre family out there, and she hopes you enjoy the show!

Cast Bios



Sage Aubrey

Chana and Gucia

Sage is so excited to be a part of Bev Facey's production of *Letters to Sala*. This is Sage's second show at Bev Facey so you may have seen them in the production of *Grease*, dancing their heart out. Sage enjoys spending their free time sketching and listening to music. "I want to thank my mom for always being there to listen to me doing lines."



**TAKE A SMOOTHIE
BREAK WITH US!**

**975 BROADMOOR BOULEVARD
SHERWOOD PARK, AB**

**101 GRANADA BOULEVARD
SHERWOOD PARK, AB**



Mya Brown-Hughes

Ala Gertner and Zusi

This will be Mya's fourth show in the Bev Facey Program. You may have also seen her as Francine in *A Christmas Carol*. Her love of theatre stretches further as Mya is directing a one-act play called *Speed Dating and Light Sabers*. Mya is excited to show you her growth in the arts and hopes you enjoy the show!



Reba Bull

Blima and Rachel

This is Reba's first-ever show at Bev Facey. She would like to offer thanks to the ones who supported her, including friends and family. "I'm glad to experience something big like this!"



Raine Cadieux

Raizel







Raine is super-excited for her grade eleven year being a part of both *Letters To Sala* and *Mamma Mia!* later this semester. Raizel is a really interesting character and such an amazing person to learn through. In her spare time away from this theatre Raine is at a different one competing for dance or in the art class room working on her next piece. She hopes you have the best time watching what we've worked so hard on and enjoy the show!

THE BEST 30 MINUTES OF YOUR DAY!



HIGH INTENSITY ACTION PACKED

BOXING / KICKBOXING
CIRCUIT FOR WOMEN


-  All Fitness Levels
-  No Class Start Times
-  Free Gloves & Wraps
-  Trainer Included
-  Unlimited Training
-  Proven Results

BOOK YOUR
FREE TRIAL TODAY!

www.30minutehit.com/sherwood-park

 @sherwoodparkhit  30MinuteHitSherwoodPark  30MinuteHit

Unit 120, 2755 Broadmoor Blvd
Sherwood Park, Alberta, T8H 2W7
sherwoodpark@30minutehit.com

 780-467-4489





Drew Cameron

Harry Haubenstock, Herbert Pache, and Nazi guard

This is Drew's second show at Facey. Earlier this year he played as Young Scrooge in *A Christmas Carol*. Drew is double-casted with Evan Smith. These two create a dynamic chemistry putting on a great scene. Later this year Drew will be playing Sky in *Mama Mia!* which will be his first musical. Evan Smith, Max Moreau and Drew were also tasked with playing German soldiers. Drew is excited to continue in the drama program throughout high school. Don't worry you won't miss this handsome man on stage.



Tori Campbell

Elizabeth and Bela

This is Tori's third show at Facey, as well as her first ever non-fiction performance! She is excited to perform as Elizabeth, the granddaughter of Sala Garncarz. In Tori's free time, she enjoys playing video games, watching House M.D. and listening to obscure music. Tori is excited for you to see her performance in *Letters To Sala*, and hopes you look out for her in *Mamma Mia!* 😊



Emma Firmaniuk

Chana and Gucia

Emma is starring in the play *Letters to Sala* and has starred as Lenore in the play *Bad Seed*. She has a major passion for the works of theatre. In her future career she wants to become an elementary teacher. Drama has been the best thing for Emma, and she encourages everyone to join drama!



Miya Gill

Caroline and Frymka

Miya is so excited and so honored to be playing Caroline and Frymka. Miya is in grade ten and *Letters to Sala* is her second show at Bev Facey. Outside of drama she spends her time skiing and biking. Miya hopes you all have a wonderful night and enjoys the show!



Camryn Healy

Young Sala

This is Camryn's eighth show at Bev Facey. You may have seen her as Belle in *A Christmas Carol* or Monica Breedlove in *Bad Seed* and you can look forward to seeing her as Ali in *Mamma Mia!* When Camryn isn't on the stage she is most likely spending time with her friends or working. She is very thankful for this program and all the opportunities it has presented her with, such as the trip to New York City and all of the incredible new people she has met in the drama room. Camryn would like to thank her amazing cast for all the love and effort they all put into this show, and she can't wait for you all to see it.



BRAD BENIUK
HOME INSPECTOR &
FRANCHISE OWNER

587-ATTABOY (587-288-2269)
1-888-539-0378

✉ brad@attaboyinspections.com

🌐 attaboyinspections.com





Paige Hafner

Young Sala

Paige is thrilled to be a part of another Bev Facey production. This is one of Paige's most exciting roles, as it is her eleventh and second last show at Facey. You may recognize her as Frenchy from *Grease*, Christine in *Bad Seed*, and you can look to see her as Lisa in *Mamma Mia!* Although Paige dedicates most of her time to doing shows, she also spends her free time reading and writing books. Paige and the cast hope you enjoy the hard work they put into the show!



Grace Henrie

Elizabeth and Bela

Grace is sooo pumped to be a part of *Letters to Sala* at Bev Facey! She has been in countless other musical productions, as well as last year's musical *Grease*, and just recently Stage Eaters Theatre's staging of *Mary Poppins*. She asks you to watch for her upcoming performance as Donna in Bev Facey's *Mamma Mia!* In her free time she loves singing show tunes, embroidering, and having fun with her family. She wants to thank her Mom and Dad for always believing in her and always giving her the strength to never give up. She also wants to thank Mr. Frank and Mr. Enns for bringing this show to life. Grace hopes you are influenced and moved by the performances and struggles of the characters in this show. "Enjoy the show!"

"Do not worry, everything will be okay. Be brave."

— *Letters to Sala*



Lily Kvalnes

Ala Gertner and Zusi

Lily is in her final year of high school and has been in theatre classes since junior high. This will be her third show. They've taken part in *The Snow White Variety Show* at Salisbury Composite High School, and *The Lost Boy* and now *Letters To Sala* here at Bev Facey. Lily is so excited to be ending their high school years with this incredibly emotional and entertaining production.



Elizabeth Kyle

Ann and Gliko

Elizabeth is in grade twelve and this is her ninth and final drama show at Facey. Outside of school Elizabeth enjoys reading and drawing. She also enjoys spending time with her cat. You may have seen her in *Bad Seed* as Regina Tasker, or in last year's show *The Lost Boy* as Tinkerbelle. Elizabeth is super grateful to her family for supporting her over the past three years. She is really excited to be in the show, and she hopes you enjoy it!



Brielle Melnychuk

Raizel

Brielle is a grade eleven student at Bev Facey and she is excited to bring this true story to life. She's previously been a part of *Grease*, *Wicked* and *Cinderella Bigfoot*. When she's not performing, Brielle enjoys traveling and attending concerts. She wants to thank the incredible cast for their gifted talents and for creating an amazing experience. "Enjoy the show!"



Sidney Moore

Ann

Sidney is a grade twelve student, and this her fourth show at Bev Facey. She is excited to finish her final year off strong with an exceptional character. Sidney is known for portraying Mrs. Henderson in *You Can't Take It With You*, Captain Hook in *The Lost Boy*, and Mrs. Daigle from *Bad Seed!* Unlike last semester, she is hoping not to get deathly ill during show week. Sidney is an artist, planning to pursue a bachelors degree in animation. She hopes you enjoy the show and asks you to watch for her as Priest Alexandria in *Mamma Mia!*

BRUNO'S TRUCKING LTD.

IS A LEADING HAULING COMPANY WITH TWO LOCATIONS, ONE IN LEDUC AND ONE IN GRANDE PRAIRIE, ALBERTA, THAT PROVIDES CUSTOMERS WITH A MEMORABLE, PROFESSIONAL ON-TIME DELIVERY SERVICE.



DISPATCH:
780-718-4454

CONTACT US

780-446-5636

dave@brunostrucking.ca

www.brunostrucking.ca



Max Moreau

Chaim Kaufman and Sidney Kirschner

Max is a grade eleven student attending Bev Facey High School. Max has appeared in *Grease* as Roger, *The Brothers Grimm: Out of Order* as Tony, and can be seen in the musical theatre production of 2025 *Mama Mia!* as Harry Bright. He is excited to be able to be a part of *Letters to Sala* and hopes you enjoy the show!



Heidi Provencher

Blima and Rachel

Heidi is seventeen years old and this is her first play at Facey. She has acted in other plays such as *The Taming of Larue* at F. R. Haythorne. Heidi would like to thank her parents for helping her and guiding her through everything.



Marley Schmidt

Sala and Rozia

Marley is a grade twelve student, and this is her fourteenth show with Bev Facey Performing Arts! You may recognize her as Christine Penmark in *Bad Seed*, or Patty Simcox in *Grease*. You can also see her as Tanya in *Mamma Mia!* this May! When not on stage you may catch her crocheting, cooking up a storm, or on a run. She is honoured for her last role in the theatre that has her heart to be such a strong and meaningful role. Marley reminds you to always remember: it's worthwhile fighting and hoping – don't give up!



Evan Smith

Harry Haubenstock, Herbert Pache, and Nazi guard

Evan is excited to bring to life the dynamic and dramatic show of *Letters To Sala*. He has been in many shows in the past, mostly musicals, though he has a few plays under his belt as well. His previous two roles in Facey dramatic shows were David in *To See the Stars*, and Ebenezer Scrooge in *A Christmas Carol*. Outside of theatre, Evan's favourite optional subject is instrumental music, where he plays trumpet. Evan also enjoys biking, bouldering, traveling and playing Dungeons and Dragons. You can also look for Evan in the upcoming production of *Mamma Mia!*, as Sam Carmichael. He'd like to thank Mr. Frank for his dedication to optimizing Evan's acting excellence, and making the show come to life!



Reagan Smith

Caroline and Frymka

Reagan is in grade eleven at Bev Fac-ey, and she is so excited to be playing Caroline! When not on stage you can find Reagan on ice at ringette. You may recognize her as Rhoda from *Bad Seed* or Ruth from *To See the Stars*. She is so excited for all of the shows she is in this spring, which also includes *Asylum* and *Mamma Mia!* "Enjoy the show!"



Sophie Spruston

Elfriede Pache and Sara

Letters to Sala is Sophie's fifth show. You might have seen her in *Speed Dating* and *Lightsabers* as Bruce, or *TFM*, or maybe you saw her as Tiny Tim in last semester's *A Christmas Carol*. When not in the theatre, Sophie enjoys shopping and hanging out with friends and siblings. Purple tulips are her favourite, so make sure you give her some after the show, wink wink!



Taylor Stewart

Lucia and Laya Dina

This is Taylor's first time taking theatre in high school and she is so thrilled to be performing in this amazing play. *Letters to Sala* is an emotionally charged performance that Taylor is overjoyed to be helping share with others.



Jaycee Wood

Elfriede Pache and Sara

Jaycee is so proud to be in this production of *Letters to Sala* with this class as her last drama show before her graduation this year. This is her third show at Bev Facey after performing in last year's hit musical *Grease* and playing her unique character Regina Tasker in *Bad Seed*. This year she is also performing as Psy and Latisha in the one act production of *Speed Dating and Light Sabers* and watch out for her in this year's musical *Mamma Mia!* When she's not busy working on any of her theatre projects this semester, you can find Jaycee working hard on her music and practicing for her music class's upcoming concert performance. Jaycee is so proud of everyone's work here today and hopes you enjoy the show!

Letters to Sala

Facey Fine Arts Team

Facey Fine Arts Team



Mhairi Berg

Music and Musical Theatre Director

Mhairi is a graduate of MacEwan's Theatre Arts Program and holds an MA in Music Theatre Performance from the Royal Conservatoire of Scotland. She is a Sterling Award Nominee for her original musical *Morningside Road* and was a Sterling Award Recipient for her original score for *Mr. Burns*, a Post-Electric Play (Blarney Productions/You Are Here Theatre). Her new play *Caw-CAW* is soon to debut with Theatre Yes. Apart from her writing, Mhairi is also active as a performer, director, and choreographer. Credits include: *Frozen* (Citadel Theatre), SAT-Co/Uniform Theatres' *Ride The Cyclone* (Sterling Recipient), *Accidental Beach*, *Die Harsh*, *The 11 O'Clock Number*, *The Adventures of Chucky & Reggie* (Grindstone Theatre), *Bear Grease* (Citadel Theatre/LightningCloud Productions), *Bright Lights* (Blarney Productions), *The Play's The Thing* (Thou Art Here Theatre), *Romeo & Juliet's Notebook*, *The Matrixx*, *Gatsby's Cabaret*, *Alison Wonderland* (Spotlight Cabaret). She is happy to be back for her 8th year working with the Musical Theatre team at Facey!

Facey Fine Arts Team

Letters to Sala

Facey Fine Arts Team

Facey Fine Arts Team



Larry Frank

Director/Fine Arts Coordinator

Larry Frank is a dynamic and multi-talented teacher and director. His eclectic tastes range from the arts to sports, and he equally loves both. Larry has enjoyed acting since the age of eight, and fell in love with the director's craft while studying at the University of Alberta. He takes great pride in the over two hundred shows he has directed, including *West Side Story*, *Jesus Christ Superstar*, *Annie*, *Les Misérables*, *Joseph and the Amazing Technicolour Dreamcoat*, *A Streetcar Named Desire*, *Dead Man Walking* and *A Tale of Two Cities*. In his spare time, Larry enjoys spending time with his beautiful wife, Lianne, and his two energetic sons, Carter, who is twenty years old and Cooper, who is seventeen. Larry would like to thank his wife and sons for making him laugh every day, and for making every day extra special!

Facey Fine Arts Team

Letters to Sala

Special Thanks

Letters to Sala was made successful through the effort and dedication of many people. We are particularly grateful to the cast, crew and their families for making a commitment to our program and sticking with it. We are also grateful to the Bev Facey Administration for their continuing support of the performing arts.

Our shows couldn't run without technical assistance and we have some of the best help around! Special thanks to the best technical theatre class ever and the tech guru himself, Mr. Gerry Enns for his ongoing support and expertise! We would also like to thank Lola Davies for her fantastic work designing and creating costumes for this show. And many thanks to Cindy Smith, our volunteer with the most! Cindy has provided help with driving, ordering things and just about anything we needed from her.

Leaning on people with organizational and computer skills makes part of our job quite easy. Thanks go to Art Packer at Newton Graphics for his work in designing and publishing our programs and posters for the entire season and to Kim Seibt for her tech wizardry with programs and basically everything! Also thanks to Kirk and Trudy Harrold at Focalpoint Photography for the outstanding work they do photographing our students and videotaping our shows. For this show, we are grateful to Sophie Wright for her excellent results with our student headshots. And a massive thank you to Salisbury Drama department for all their help with costumes, props and set pieces!

Thank you to all of our sponsors for supporting the Arts and to all our wonderful volunteers who support us every day! Finally, to our audience – your support and appreciation keep all of us going and we are grateful for both. We hope to see everyone back in May for our blockbuster production of *Mamma Mia!* at Festival Place.

Larry Frank

Letters to Sala

Facey's 2024-2025 Season

Bad Seed

By Maxwell Anderson

Adapted from

William March's Novel

November 25, 26, 27 & 28, 2024



A Christmas Carol

By Charles Dickens

Adapted by Romulus Linney

December 9, 10, 11 & 12, 2024



Letters to Sala

Adapted from the book

Sala's Gift by Ann Kirschner

April 28, 29, 30 & May 1, 2025



Mamma Mia!

Music and lyrics by

Benny Andersson

and Björn Ulvaeus

May 19, 20, 21 & 22, 2025

